

Transit Master Plan Public Meeting

May 25, 2021

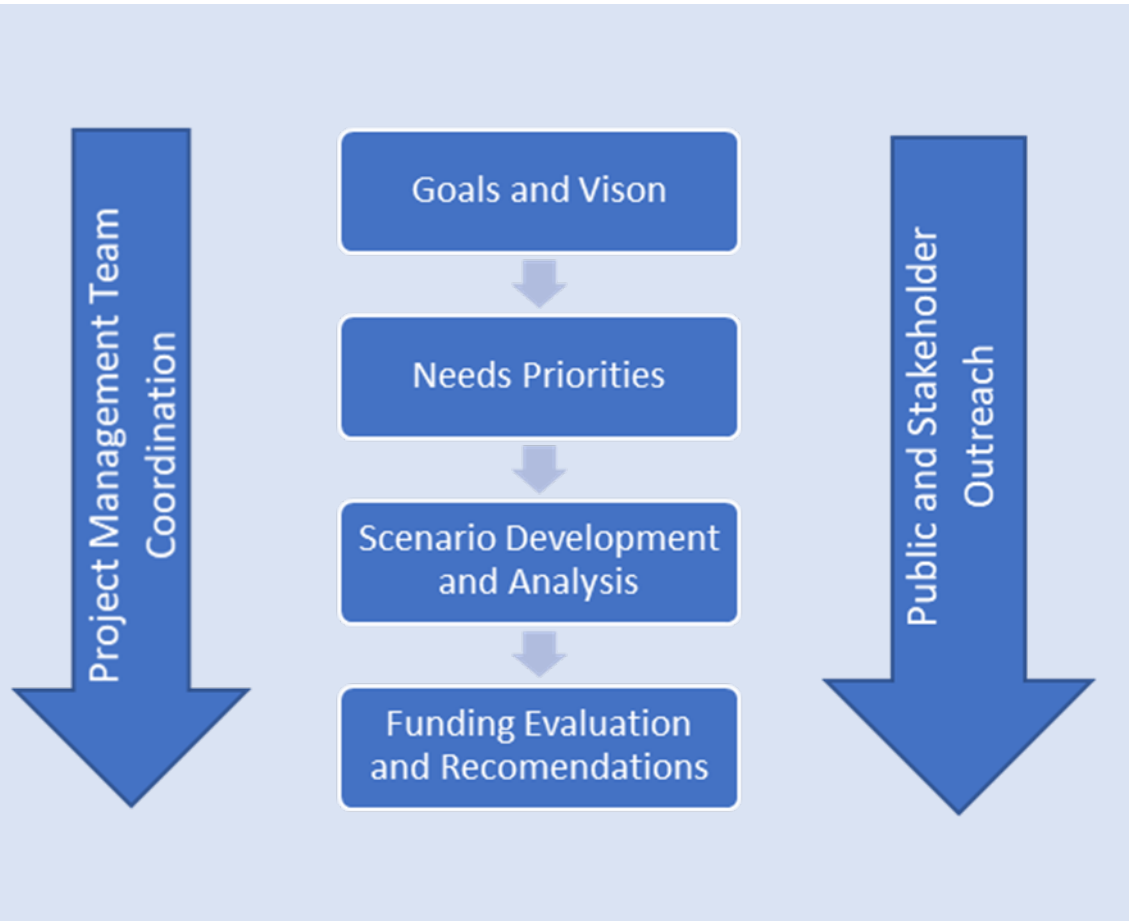


Agenda

- Study Overview, Purpose, & Schedule
- Technical Analysis Overview
- Next Steps & Opportunities for Input



Study Overview

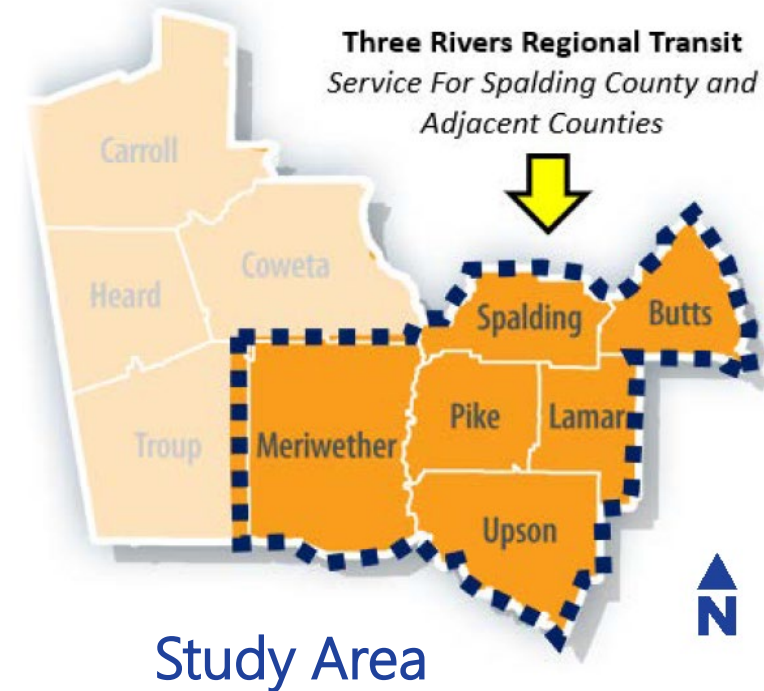


Current Tasks

- Task 1 - Project Management
- Task 2 - Stakeholder and Public Outreach
- Task 3 - Existing and Future Conditions
- Task 4 - Service Needs & Market Analysis
- Task 5 - Service Strategies
- Task 6 - Investment Services
- Task 7 - Master Plan Document

Study Purpose

Spalding County is interested in understanding the existing and future demands of regional transit within the County boundaries and the connections to adjacent municipalities.



Study Schedule

PROJECT SCHEDULE



Preliminary Goals

Your feedback at today's meeting will help shape the final goals for the study!

Draft Study Goals

Enhance Land Use

Strengthen the connection between land use and transit planning

Enhance Economic Vitality

Improve the Local Economy

Enhance Multi-Modal Connectivity

Provide convenient transit service to local and regional destinations

Enhance Access & Equity

Support mobility and access for all

Enhance Efficiency & Stability

Ensure efficient transit system implementation and operations and stable funding

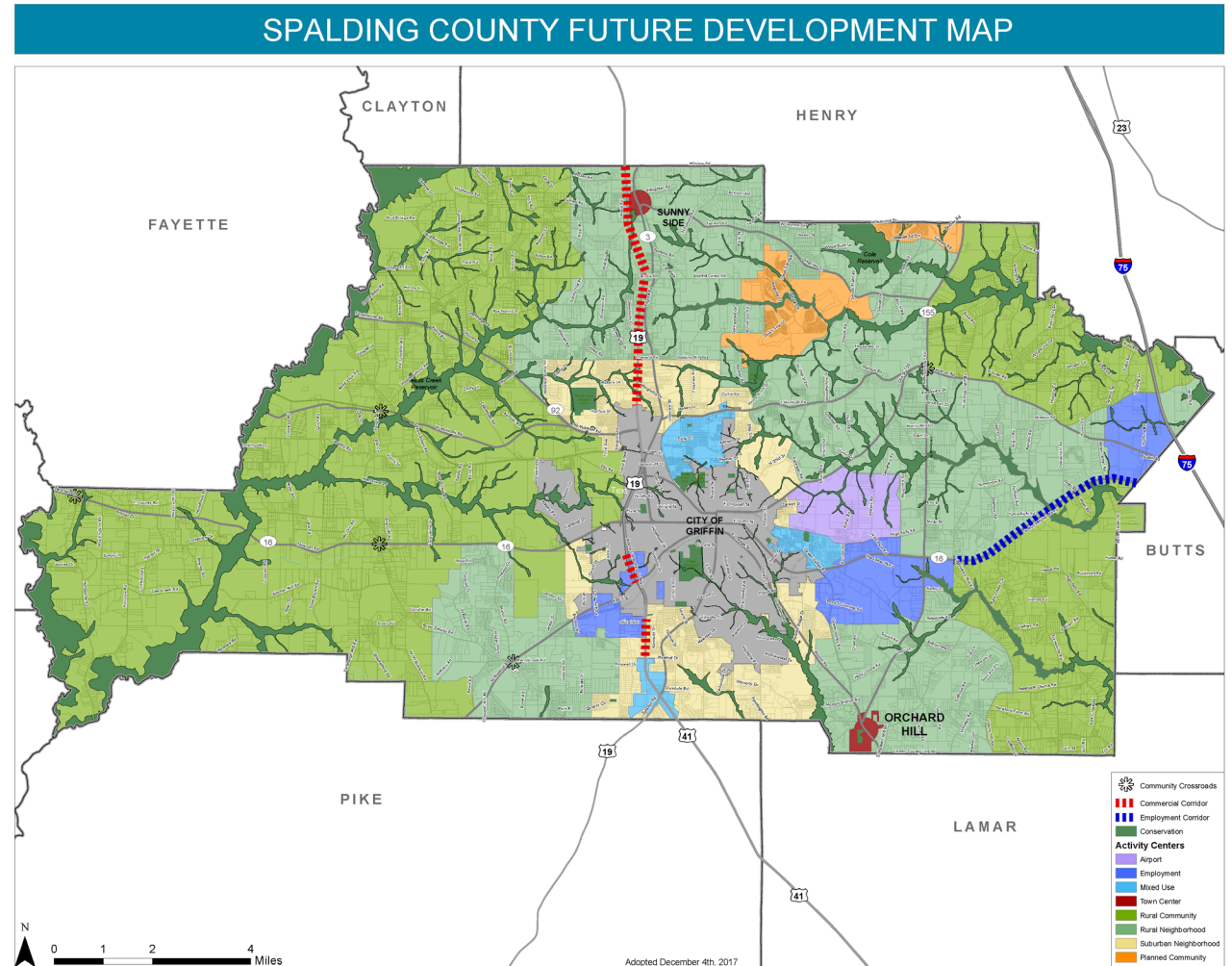
Provide a Balanced Transit System

Increase the use of transit as a viable mode within Spalding County

Technical Analysis: Existing and Future Conditions

Existing and Future Conditions

- Previous Plans
- Land Use
- Demographic
- Socioeconomic
- Ridership
- Financials / Funding
- Policies / Political Will



Existing Transit Performance

Transit service in Spalding County is currently provided by Three Rivers Regional Commission (TRRC), which also provides regional transit service to other counties including: Butts, Lamar, Pike, Meriwether, and Upson Counties.

SPALDING FLEET BY THE NUMBERS



5 Vehicles



26,431 Annual Trips



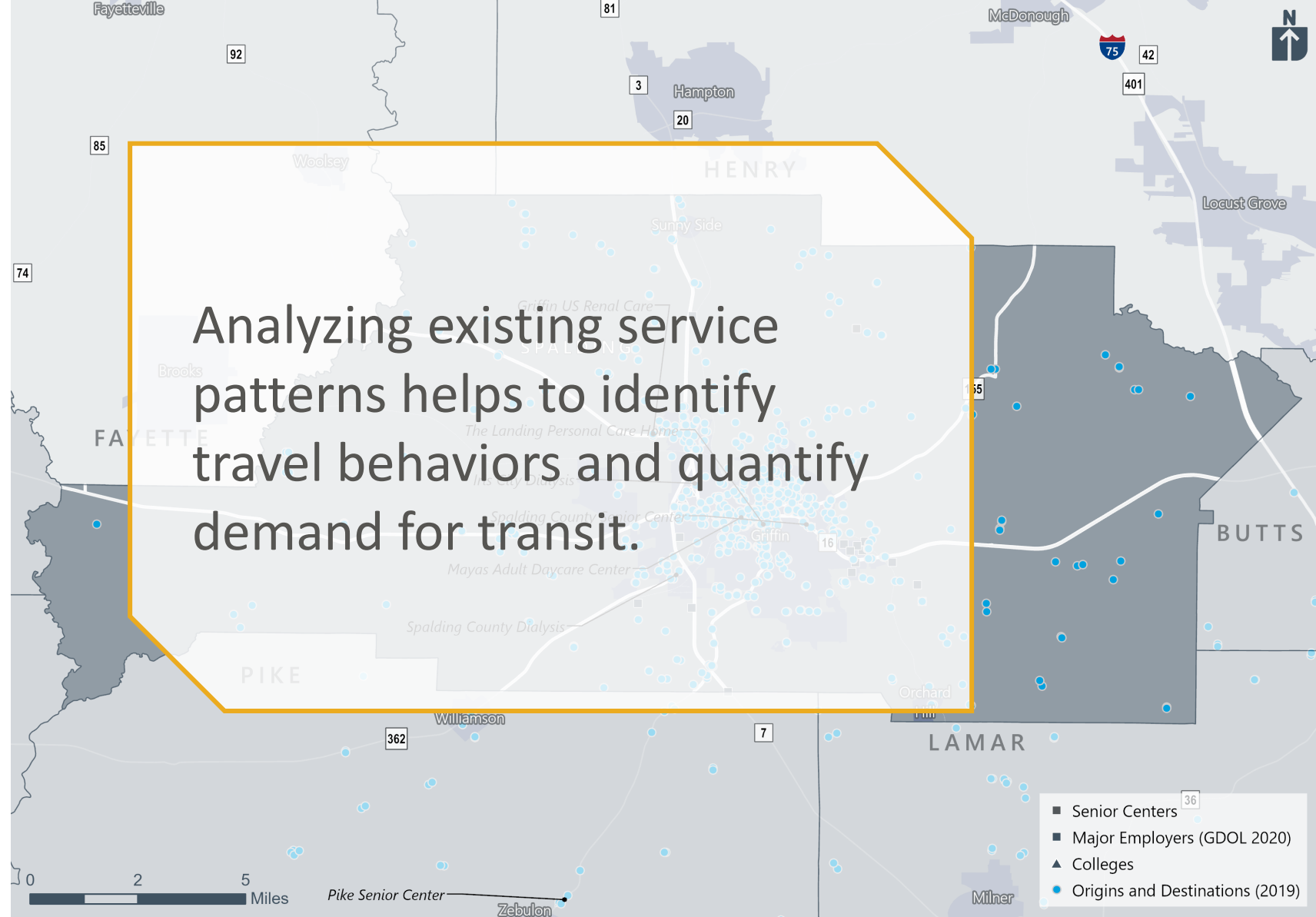
\$485,040 Annual
Operating Costs



\$13,300 Griffin/Spalding
County Local Funding
Contribution

Existing Transit Performance

- Origins and Destinations:
 - Trips concentrated in/around Griffin
 - Frequently associated with medical appointments and senior care
 - Inter-County travel is common



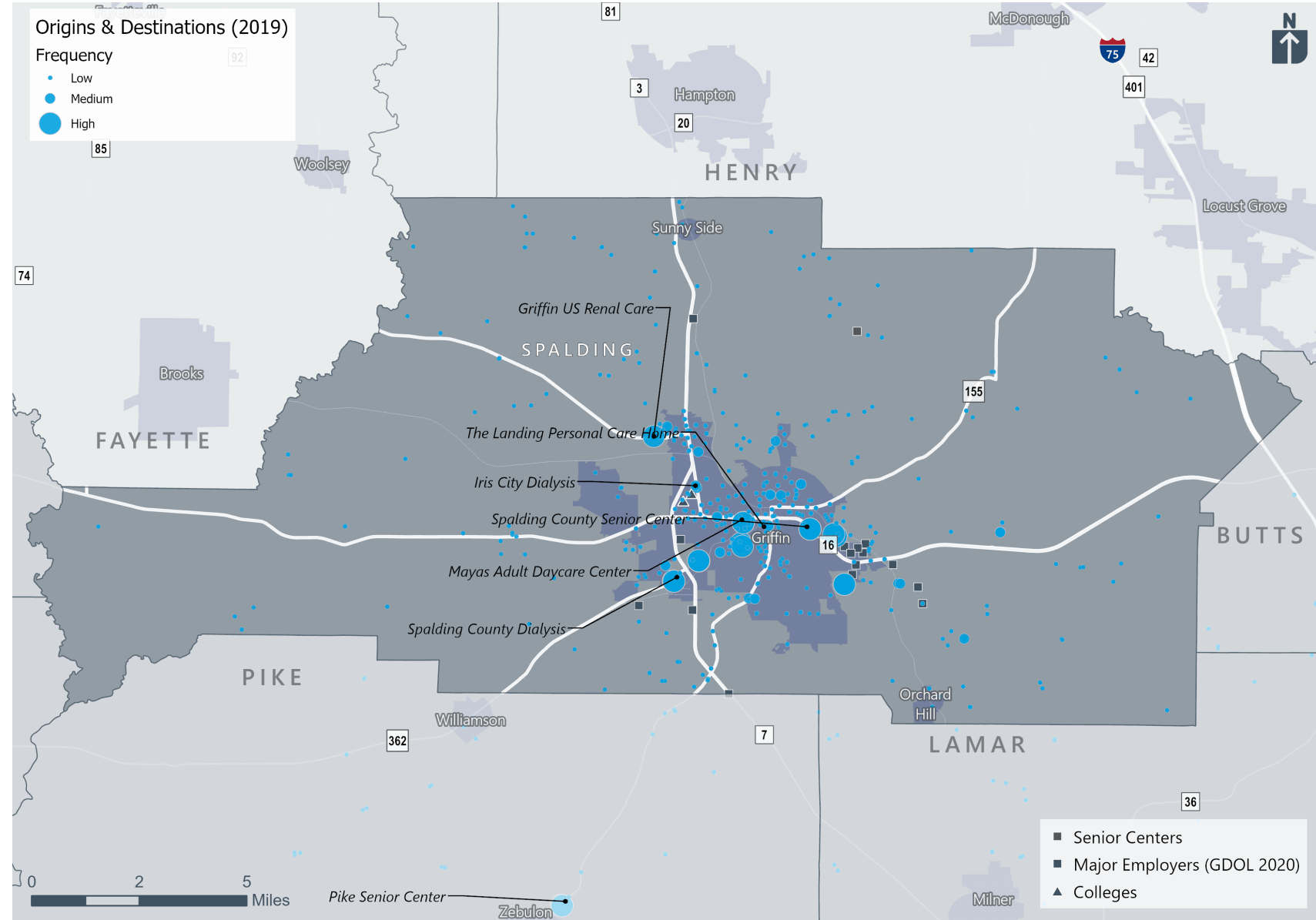
O&D Points (2019)

Source: Three Rivers Regional Commission Ridership Data (2019)

Spalding
Everything you need in Spalding

Existing Transit Performance

- Frequent Trips:
 - Higher frequency origins and destinations concentrated in Griffin
 - Common destinations with high frequency trips include medical and senior care



O&D Points (2019)

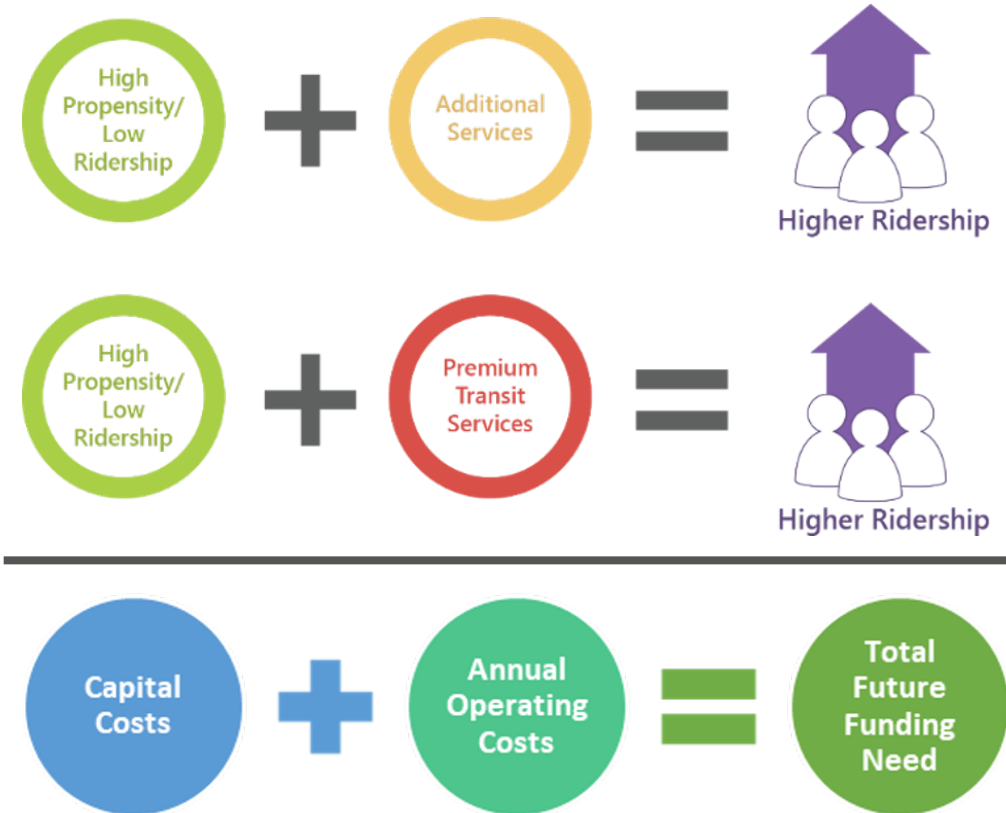
Source: Three Rivers Regional Commission Ridership Data (2019)

Spalding
Everything you need in Spalding

Technical Analysis: Scenarios and Strategies

Service Needs, Market and Strategies

- Federal Transit Guidelines
- Service Types
- Service Costs
- Potential Ridership
- Fare Box Revenues
- Funding Options



Next Steps & Opportunities to Get Involved

Next Steps

- Complete survey and analyze results
- Incorporate public feedback with technical analysis
- Develop service and investment strategies
- Host public input opportunities at key milestones



Opportunities to Get Involved

- Complete our Survey!!
- Give your feedback on comment cards
- Submit your contact information for future project updates
- Tell your family / friends / coworkers / classmates about our study





Thank you!

We appreciate your participation and feedback.